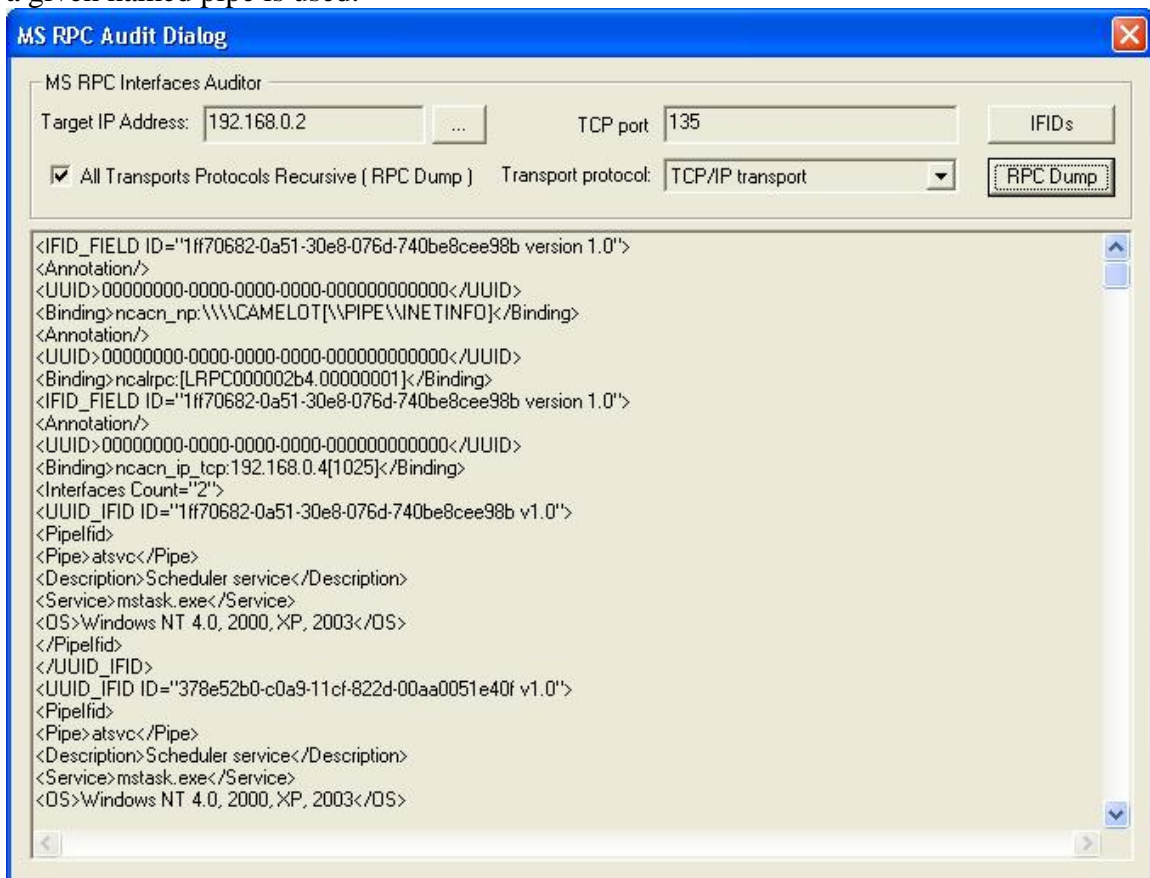


<http://www.nsauditor.com>

Nsasoft llc.

## MsRPC Audit

Audit MSRPC, is a Microsoft implementation of DCE RPC. The auditor dump is a list of named pipes that are used by Windows RPC services as endpoints. The interface identifier associated with each named pipe represents the service typically accessed when a given named pipe is used.



Enter the **Target IP Address** by clicking on the **Browse** button and select the **Transport Protocol** from the combobox.

This tool supports the following protocol types TCP/IP transport, UDP/IP transport, SMB named pipe transport, Local RPC transport, HTTP transport.

Click on the button **IDIDs** to dump information for the specified TCP port.

To dump information about all available ports select **All Transports Protocols Recursive** and click on the button **RPC Dump**.