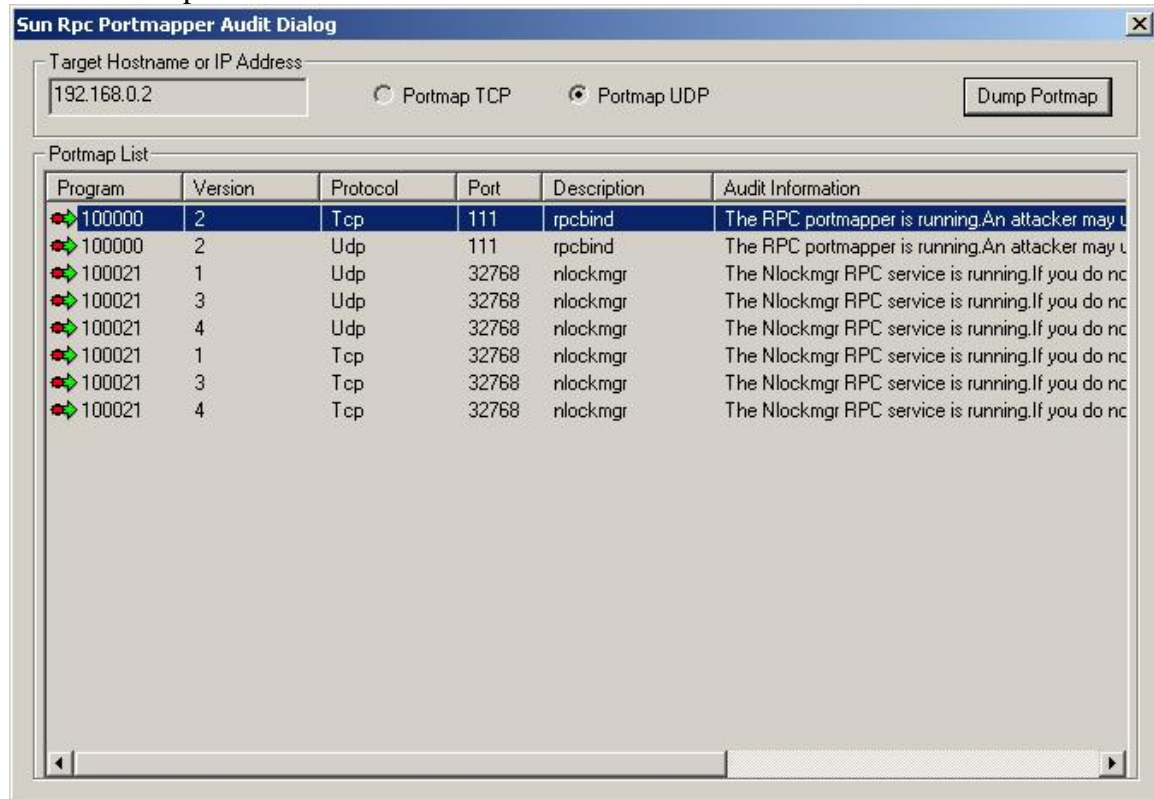


<http://www.nsauditor.com>

Nsasoft llc.

## SunRpc Audit

SunRpc Auditor is a tool to examine Remote Procedure Call (RPC ) services for vulnerabilities. An audit that looks for the existence of a vulnerable rpc server running on a remote computer will fall under this section.



This tool allows you to dump a portmap in the **Portmap List**.

The portmap list contains the following fields:

**Program** ( the program name using the port ), **Version**, **Protocol** ( the protocol name ), **Port** ( port number), **Description** ( port description ) , **Audit Information**.

To start audit enter the **Target Hostname or IP Address** and click on the **Dump Portmap** button. You should also specify the protocol type ( **Portmap TCP** or **Portmap UDP**).