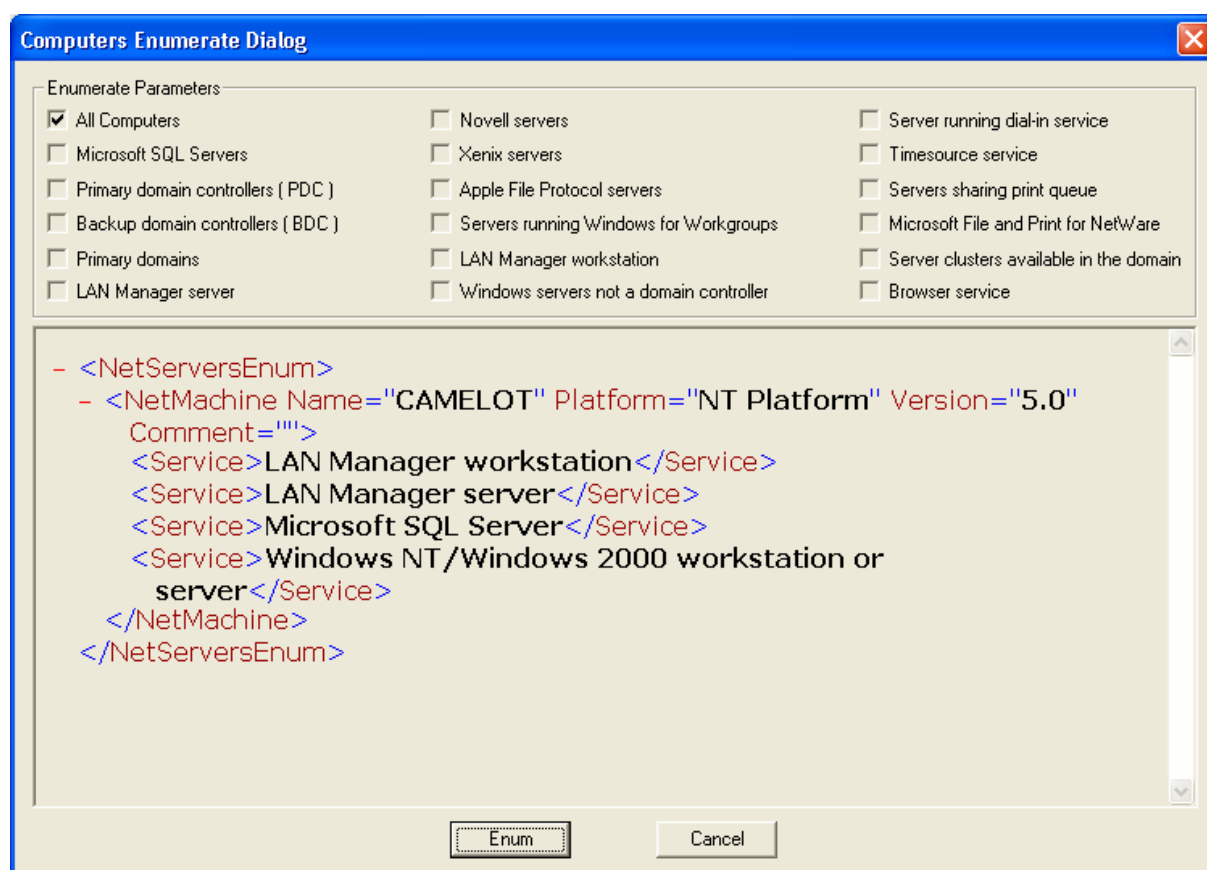


## Enumerate Computers

Enumerate computers is a tool to enumerate computers in a domain. Depending on enumeration parameters the tool can work in different ways. It can enumerate all computers ( if **All Computers** is selected ), all SQL servers only (if **Microsoft SQL Servers** is selected ), all primary domain controllers only ( if **Primary domain controllers** is selected ), backup domain controllers only ( if **Backup domain controllers** is selected), primary domains only ( if **Primary domains** is selected ),etc.



You can enumerate different server types by selecting more than one type. To start the process select the server types you want to enumerate and click on the **Enum** button. The enumeration results will be displayed in XML format. To close the dialog click on the **Cancel** button.