

<http://www.nsauditor.com>

Nsasoft Ilc.

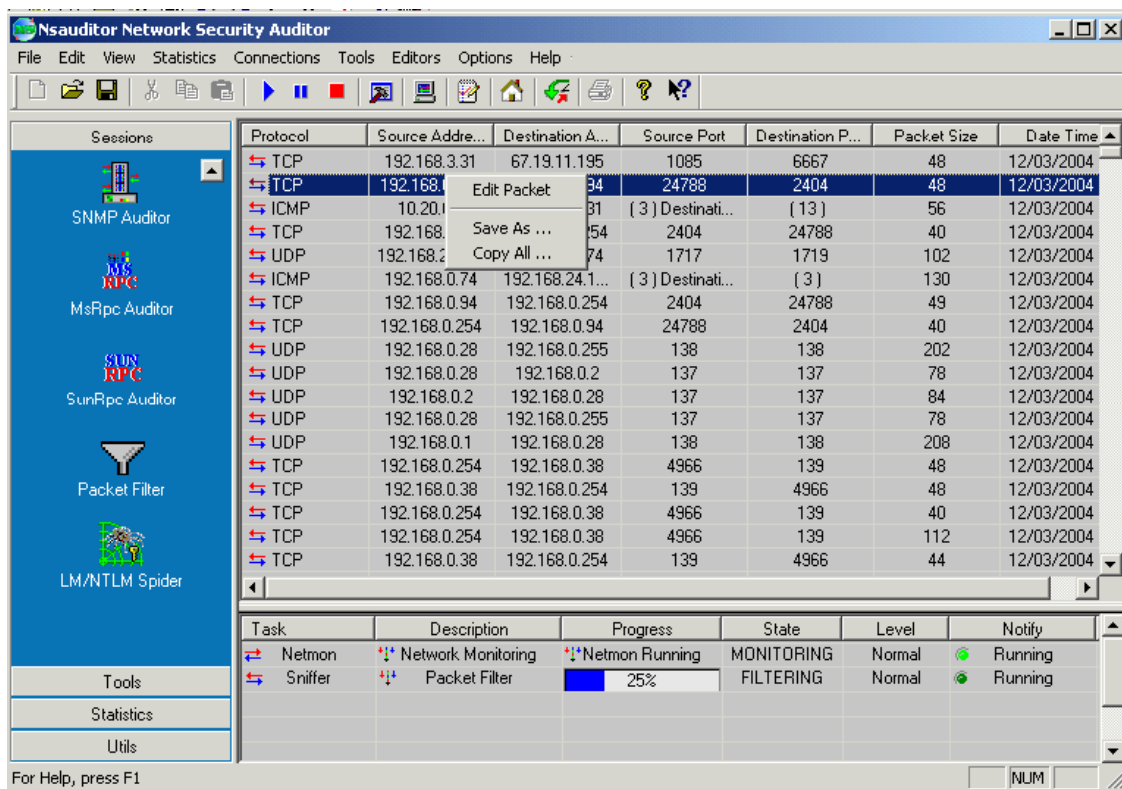
Edit Packet

Packet editor is a tool which allows to edit a filtered packet header. To filter a packet select Packet Filter in Sessions tab. After setting appropriate settings of a packet to filter you can start filtering process by clicking on the button Start. The packets with the specified parameters will appear in the screen. Right clicking on the row brings up a pop-up menu with the following commands:

Edit Packet – opens Packet Editor dialog.

Save As – saves the data to the text file.

Copy All - copies all rows.



Packet editor is an editor that allows you to view the decoded packet and edit the packet header and data.

Right clicking on the bottom of the window brings up the pop up menu with the following commands:

Select All - selects all packet data.

Save As – saves the data to the selected file.

Copy – copies the selected part to the clipboard.

Past - pasts from the clipboard.

Past From File - pasts data from the selected file.

Close - closes the dialog.

Packet Editor

Octets	Fields	Values
	12/03/2004 14:39:43	192.168.25.32 6078 --> 192.168.75.202 7308 [UDP]
----- IP Header -----		
.....	Version	4
.....	Header Length	20
.....	Precedence	Network Control
.....	Delay	Low Delay
.....	Throughput	Normal Throughput
.....	Reliability	Normal Reliability
.....	ECT Bit	Transport protocol will ignore the CE bit
.....	CE Bit	No Congestion
.....	Total Length	200
.....	Identifier	0
.....	Flag DF	Don't Fragment
.....	Flag MF	Last Fragment
.....	Fragment Offset	0
.....	Time To Live	255
.....	Protocol	UDP
.....	Checksum	93F9
.....	Source Address	192.168.25.32
.....	Destination Address	192.168.75.202
.....	Options	No Options
----- UDP Header -----		
.....	Source Port	6078
.....	Destination Port	7308
.....	Length	180
.....	Checksum	0

Addr	000E	Hex	93	Dec	147	Bin	10010011	Ascii	!										
Addr	Hex																		
									Ascii										
0000	6F	42	B0	41	45	F0	00	C8	00	00	40	00	FF	11	00	20	C0	A8	0B'AEB.E..@.y.IuA".A"
0016	4B	CA	17	BE	1C	8C	00	B4	00	00	80	00	22	66	00	0A	29	A6	KE.M.I..f..@a..)
002C	52	4B	46	43	46	46	43	43	48	4F	5D	6D	F9	DD	00	8D	BC	BB	RKFCFFCCHO]nuYiCAAcM»
0042	BD	C3	C2	BF	C0	CE	51	2E	1E	1C	28	37	3E	79	00	CF	D5	F2	%AAcAIQ..(?y%~^ATI0b
0058	56	4A	51	6D	D6	CE	D5	CE	C9	C6	CD	E3	FC	F9	00	89	53	45	VJQmOI0IEIaunia00ciSE
006E	3B	34	31	36	3C	49	64	DD	CA	C3	C0	C4	C8	C9	00	8D	BD	BA	:416<IdYEAAAEEEA%e%#%#
0084	B9	C2	57	25	15	1C	39	3E	4E	D8	B5	AA	A9	BB	00	8B	3E	5B	'AV%.9>N0p%#00550000
009A	CB	C4	C0	C4	C4	C2	DD	6E	4D	47	48	53	6D	EE	00	C2	68	53	AAAAAAAA00000000E0EiAhS
00B0	47	3F	3B	3C	40	4A	55	6E	DF	D7	D4	D4	D9	DD	00	8B	BD	BF	G?;<@JUnBx00UYxIcA%»%&

Packet editor is a very useful tool in packet analyzing. It has a user-friendly interface and is designed for easy use.