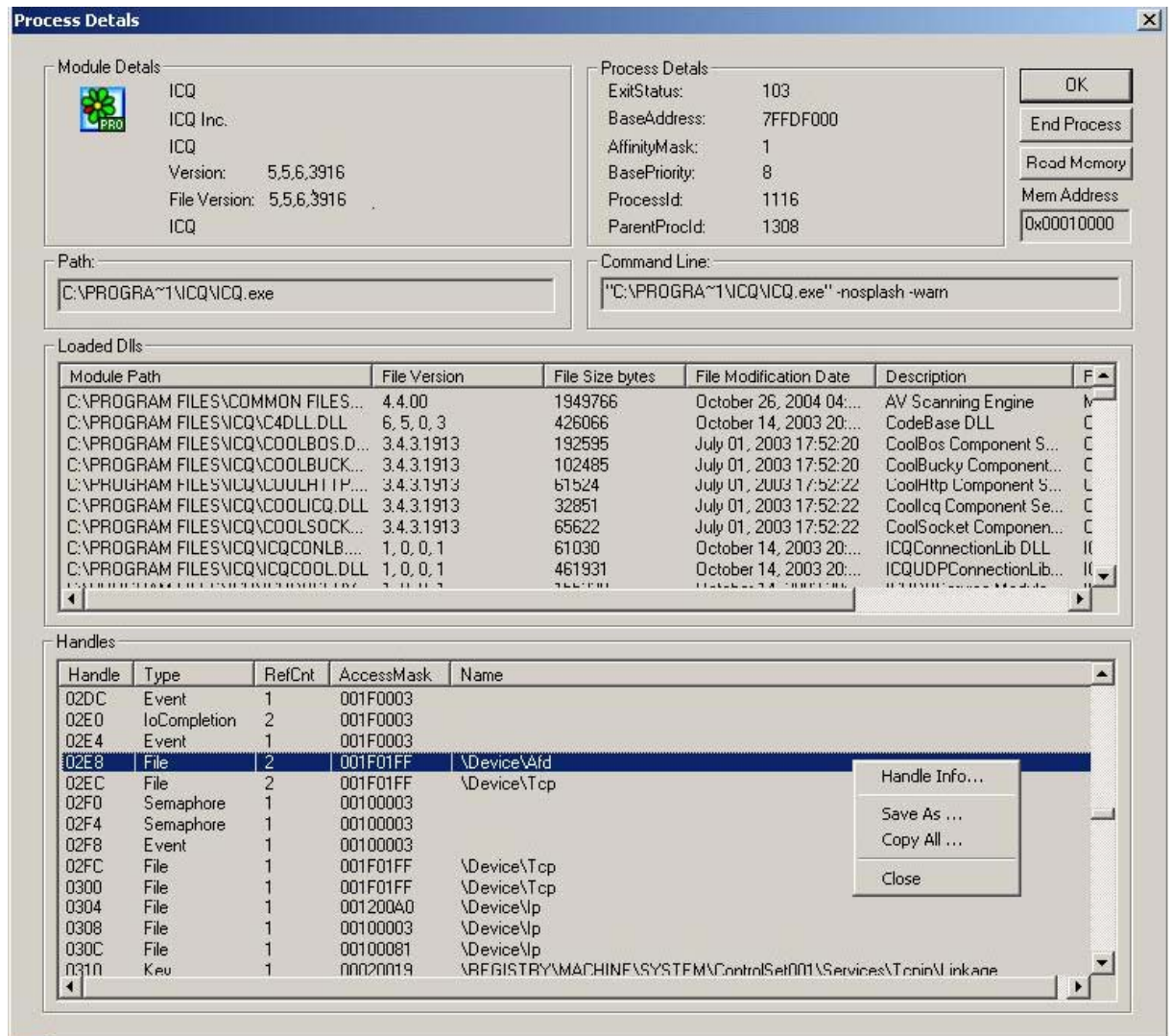


Process Details

Process Details shows the process details. The dialog contains information about **Module Details** (Version, File Version, etc), **Process Details** (Exit Status, Affinity Mask, Base Priority, Process Id, Parent Process Id).



Path and **Command Line** contain the executable file path and the command line string accordingly .

Loaded Dlls section contains information about loaded dlls , including Module Path, File Version, File Size, File Modification Date, Description, etc.

Handles section contains handle information including Handle, Type, RefCount, AccessMask, Name.

Handle Info – shows the selected handle information.

Save As – saves the data to the text file.

Copy All - copies all rows.

Close- closes the dialog.